

Professional Manufacturer of
ROBOT VISION
Devices



10
YEARS OF
EXPERIENCE



Online Store

+86 755 8605 2486

info@viewprotech.com

www.viewprotech.com www.viewproonline.com

Rm 1101~1103, 11th Fl, Bld D, Aotekexing Science Park, No. 10 Qiongyu Rd, Yuehai Subdist, Nanshan Dist, Shenzhen, China

Q2 (2025)



QUALITY FIRST



CONTENTS

- 01** Hawkeye Series

- 03** 1280 High-Definition IR Thermal Gimbal Camera Series

- 05** AI Object Tracking Series

- 13** Target GPS Coordinate Calculation and Laser Rangefinder Series

- 14** T Series Dual-Sensor Object Tracking Series

- 16** Single Sensor Object Tracking Series

- 18** Single Sensor Gimbal Camera Series

- 19** Specialized Payload Series

- 20** Viewport Overview

- 21** BlueEye Overview

- 23** VStation Overview

- 25** The Previous Exhibitions





S
U
T
U
O
B
A

COMPANY PROFILE

Established in 2010, Viewpro Elec. Ltd is a Hi-tech manufacturer specialized in R&D and manufacturing of cutting-edge zoom gimbal cameras for industrial and Commercial robots: Unmanned Aerial Vehicle (UAV), Unmanned Ground Vehicle (UGV) and Unmanned Surface Vehicle (USV).

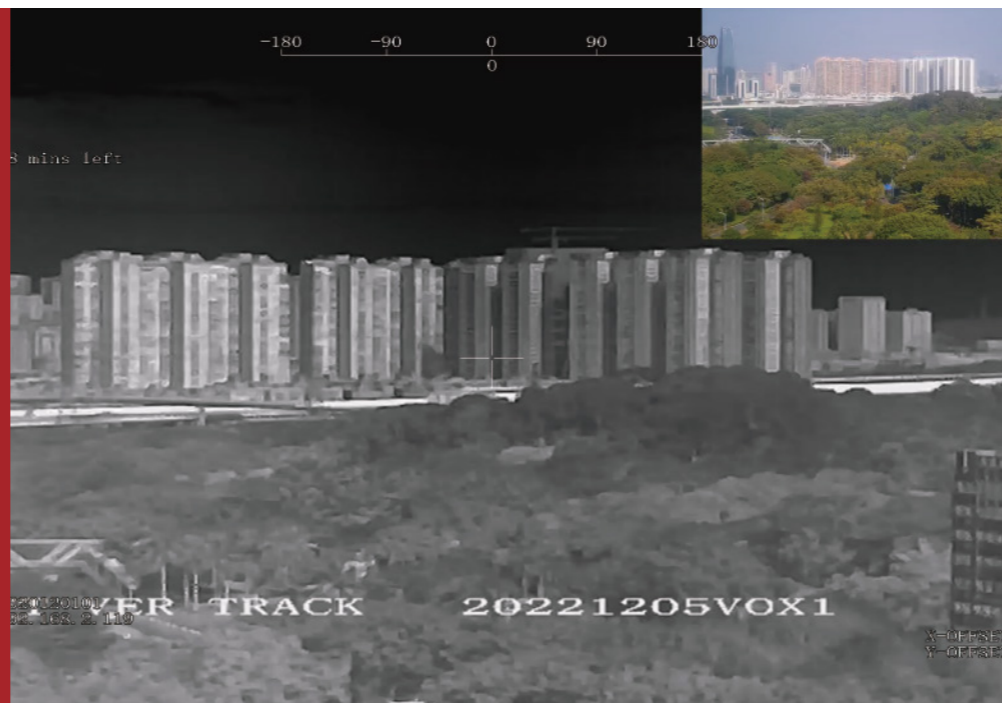
With the strong R&D team, we focus on research and innovation in image processing, optical zoom algorithm, object tracking, object GPS coordinate resolving, AI object tracking and camera stabilizing solutions based on direct drive brushless motors. Extensive product rang with comprehensive professional functions enlarge the applications of our gimbal cameras on robots, helicopters, fixed wings and multi-rotors with different autopilots in various domains, such as infrastructure, public safety, construction and energy etc. Meanwhile, OEM&ODM service is one of our important advantages, which brings us challenge and new progress.

The seamless docking with DJI Matrice series drones since 2018 has enhanced the leadership and competitiveness of Viewpro in UAV gimbal camera field. In the rapidly developing field of UAV, we devote to constant improvement and enhancing of the main and additional features of our products.

To enhance productivity and security for humans with robot vision devices is our long-term vision. Welcome to join us!

Hawkeye Series

Viewpro new generation of micro prime lens systems focus on the micro UAV application, combined the IR thermal sensor and high definition visual camera with Viewpro's leading stabilization and intelligence technology, the micro camera system is easy to realize powerful insights that save time, money and lives.



U2 Pro 4K Dual EO Sensors Object Tracking Micro Gimbal Camera

Imager sensor	1/3.8" CMOS
Lens 1	3.2mm Prime lens, FOV 83°x53°
Lens 2	16mm Prime lens, FOV 20°x11°
Resolution	3840X2160@30fps
Object Tracking	✓
Working voltage	12V
Output	IP / 1080p
Control method	UART / TCP / UDP
N.W.	109g
Dimension	44.7*33*78mm



U818M Micro Prime Lens EO/IR with LRF Object Tracking Gimbal Camera

Imager sensor	CMOS
Lens	8mm Prime lens, FOV 38.3°x22.1°
Resolution	1920x1080
IR Thermal imager	640x512@60fps, 18mm focus length, 12µm
Laser range	5-1200m
Object Tracking	✓
Working voltage	12V
Output	IP
Control method	UART / S.BUS / TCP
Local storage	SD card up to 512G
N.W.	319g
Dimension	62.9*88*107.2mm



U818 Micro Prime Lens EO/IR Object Tracking Gimbal Camera

Imager sensor	CMOS
Lens	8mm Prime lens, FOV 38.3°x22.1°
Resolution	1920x1080@60fps
IR Thermal imager	640x512@60fps, 18mm focus length, 12µm
Object Tracking	✓
Working voltage	12V
Output	IP
Control method	UART / S.BUS / TCP
Local storage	SD card up to 512G
N.W.	260g
Dimension	61.6*67.6*99.6mm



Q818X Micro Prime Lens Dual EO+IR Triple sensor Object Tracking Gimbal Camera

Lens 1	66°x40°(5.7mm)
Lens 2	26°x14°(16mm)
Resolution	2560x1440 @60fps
IR Thermal imager	640*512, 18mm focus length, 12µm
FOV	24°x18.1°
Object Tracking	✓
Working voltage	16V
Output	IP
Control method	UART/S.BUS/TCP/UDP
Local storage	SD card up to 512G
N.W.	210g
Dimension	62*65.9*99.8mm



1280 High-Definition IR Thermal Gimbal Camera Series

1280*1024 High-Definition uncooled long-wave infrared detection thermal image sensor features of longer detection distance, digital zoom coaxiality, more accurate and stable performance. The invisible objects by the naked eye can be able to be transformed into visual images through infrared thermal imaging technology. It is mainly used in detection, inspection, search and rescue, and other applications in the unvisual environment of at night or dark environments, fires, smoke, etc.

QIR50T Pro

50mm High-Definition IR Thermal Object Tracking Gimbal Camera (1280*1024)

IR Thermal imager	50mm focus length
Resolution	1280*1024
Pixel pitch	12μm
Object Tracking	✓
Working voltage	4S~6S
Output	IP / SDI
Control method	UART / PWM / PPM / S.BUS / TCP / UDP
Local storage	SD card up to 512G
N.W.	943g
Dimension	112*136*181.3mm



Q30TIR Pro

30x EO/IR Dual Sensors High-Definition IR Thermal Object Tracking Gimbal Camera (IR 1280*1024)

Imager sensor	1/2.8" SONY CMOS
Lens	30x optical zoom, f=4.3~129mm
Total pixel	2.13MP
IR Thermal imager	1280*1024 , 50mm focus length, 25Hz, 12μm
Object Tracking	✓
Working voltage	4S~6S
Output	IP / SDI
Control method	PWM / PPM / UART / S.BUS / TCP
Local storage	SD card up to 512G
N.W.	1282g
Dimension	120*140.9*212.2mm



U30TIRM-HD

30x EO Triple Sensors 1280*1024 High-Definition IR Thermal 5KM LRF Object Tracking Gimbal Camera

Imager sensor	1/2.8" SONY CMOS
Lens	30x optical zoom, f=4.3~129mm
Total pixel	2.13MP
IR Thermal imager	1280*1024 , 50mm focus length, 12μm, 50Hz
Laser range	50~5000m
Object Tracking	✓
Working voltage	4S~6S
Output	IP / SDI
Control method	PWM / UART / S.BUS / TCP / UDP
Local storage	SD card up to 512G
N.W.	1475g
Dimension	155*143.5*228.2mm



Q40TIRM-HD

40x EO Triple Sensors 1280*1024 High-Definition IR Thermal 5KM LRF Object Tracking 3-Axis Gimbal Camera

Imager sensor	1/2.8" Sony CMOS Sensor
Lens	40x, F=4.25~170mm
Total pixel	2.13MP
IR Thermal imager	1280*1024 , 50mm focus length, 12μm, 50Hz
Laser range	50~5000m
Object Tracking	✓
Working voltage	4S~6S
Output	IP / SDI
Control method	PWM / UART / S.BUS / TCP / UDP
Local storage	SD card up to 512G
N.W.	1512g
Dimension	145*146.9*228.2mm



Q30TIRM-15100

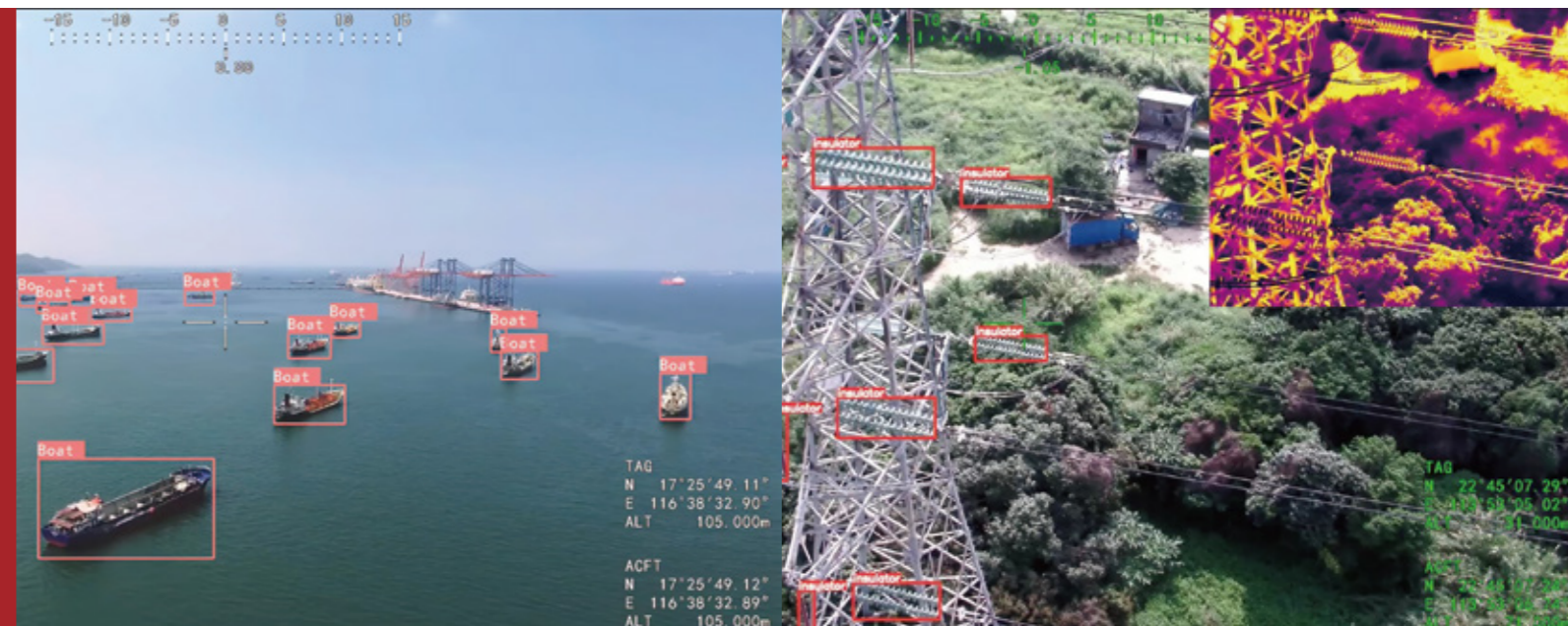
30x EO Triple Sensors 1280*1024 High-Definition IR Thermal 10KM LRF Object Tracking Gimbal Camera (7X IR)

Imager sensor	1/1.8 Type STARVIS CMOS
Lens	30x optical zoom, f=6.5~162.5mm
Total pixel	4.17MP
IR Thermal imager	1280*1024 , 15~100mm focus length , 7x optical zoom, 12μm, 25Hz
Laser range	50~10000m
Object Tracking	✓
Working voltage	4S~6S
Output	IP / SDI
Control method	PWM / S.BUS / UART / TCP / UDP
Local storage	SD card up to 512G
N.W.	5120g
Dimension	236*266.7*325.5mm



AI Object Tracking Series

The automatic target recognition technology uses computer vision to replace manual decision-making, and combines deep learning technology to extract and classify the targets in the field of view. Efficiently identify targets of interest, enhance the autonomy and intelligence level of UAV systems, weaken or even get rid of the dependence on operators. It reduces the operator's burden, shortens the reaction time of the entire system, improves the anti-interference capability, and provides accurate and reliable information for the next reconnaissance on the target. It supports the development of artificial intelligence vision applications, the rapid deployment of algorithms, and the unlimited expansion of applications.



A609

Micro Prime Lens EO/IR Dual Sensors AI Object Tracking Gimbal Camera

Imager sensor	1/2.9" CMOS
Lens	6mm Prime lens, FOV 50 x 28°, 12x digital zoom
Total pixel	2MP
IR Thermal imager	640x512, 9.1mm focus length, 12μm
AI Function	Human/Vehicle AI identification and tracking
Object Tracking	✓
Working voltage	4S~6S
Output	IP
Control method	UART / S.BUS / TCP / UDP
Local storage	SD card up to 256G
N.W.	190g
Dimension	52*69*96.2mm



A613

Micro Prime Lens EO/IR Dual Sensors AI Object Tracking Gimbal Camera

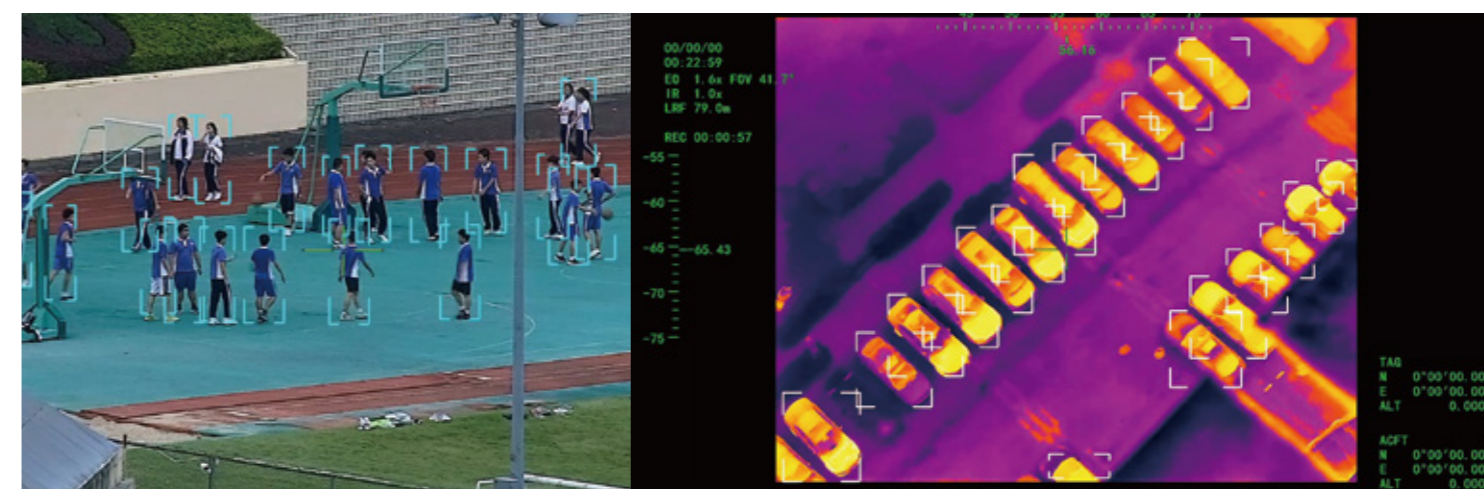
Imager sensor	1/2.9" CMOS Sensor
Lens	6mm Prime lens, FOV 50 x 28°, 12x digital zoom
Total pixel	2MP
IR Thermal imager	640x512, 13mm focus length, 12μm
AI Function	Human/Vehicle AI identification and tracking
Object Tracking	✓
Working voltage	4S~6S
Output	IP
Control method	UART / S.BUS / TCP / UDP
Local storage	SD card up to 256G
N.W.	238g
Dimension	81*62*106.2mm



A609R

Micro Prime Lens EO+IR+LRF Triple-sensor AI Object Tracking Gimbal Camera

Imager sensor	1/2.9" CMOS Sensor
Lens	6mm Prime lens, FOV 50 x 28°, 12x digital zoom
Total pixel	2MP
IR Thermal imager	640x512, 9.1mm focus length, 12μm
AI Function	Human/Vehicle AI identification and tracking
Laser range	5~1200m
Object Tracking	✓
Working voltage	16V
Output	IP
Control method	UART / S.BUS / TCP / UDP
Local storage	SD card up to 256G
N.W.	235g
Dimension	62*78*106.2mm



A10 Pro

10x EO AI Object Tracking Gimbal Camera

Imager sensor	1/2.8" SONY CMOS
Lens	10x optical zoom, f=4.7~47mm
Total pixel	5.13MP
AI Function	Human/Vehicle AI identification and tracking
Object Tracking	✓
Working voltage	4S~6S
Output	1080P micro HDMI / IP
Control method	PWM / PPM / UART / S.BUS / TCP / UDP
Local storage	SD card up to 256G
N.W.	510g
Dimension	96*121.5*157.7mm



A10T Pro

10x EO+IR Dual Sensors AI Object Tracking Gimbal Cameras

Imager sensor	1/2.8" SONY CMOS
Lens	10x optical zoom, f=4.7~47mm
Total pixel	5.13MP
IR Thermal imager	640*512, 19mm focus length, 25Hz, 12μm
AI Function	Human/Vehicle AI identification and tracking
Object Tracking	✓
Working voltage	4S~6S
Output	1080p micro HDMI / IP
Control method	PWM / PPM / UART / S.BUS / TCP / UDP
Local storage	SD card up to 256G
N.W.	582g
Dimension	96*121.5*157.7mm



A10TR Pro

10x EO+IR AI Object Tracking Target GPS Coordinate Calculation and LRF Gimbal Camera

Imager sensor	1/2.8" SONY CMOS
Lens	10x optical zoom, f=4.7~47mm
Total pixel	5.13MP
IR Thermal imager	640*512, 19mm focus length, 12μm
AI Function	Human/Vehicle AI identification and tracking
Laser range	5~1500m
Object Tracking	✓
Working voltage	4S~6S
Output	1080p micro HDMI / IP
Control method	PWM / PPM / UART / S.BUS / TCP / UDP
Local storage	SD card up to 256G
N.W.	654g
Dimension	100*114.7*174.2mm



A20KTR

20x EO 4K Triple Sensors AI Object Tracking Target GPS Coordinate Calculation and LRF Gimbal Camera

Imager sensor	SONY 1/2.5" "Exmor R" CMOS
Lens	20x optical zoom, f=4.4~88.4mm
Total pixel	8.51MP
IR Thermal imager	640*512, 35mm focus length, 12μm, 25Hz
AI Function	Human/Vehicle AI identification and tracking
Laser range	50~3000m
Object Tracking	✓
Working voltage	4S~6S
Output	1080p micro HDMI / IP (4K)
Control method	PWM / S.BUS / UART / TCP / UDP
Local storage	SD card up to 256G (4K)
N.W.	1036g
Dimension	130*161*201.8mm



Mini H30T

30x EO+IR+LRF Triple-sensor AI Object Tracking Gimbal Camera (Starlight level)

Imager sensor	1/1.8" STARVIS CMOS
Lens	30x optical zoom, f=6.5~162.5mm
Total pixel	4.17MP
Lux	0.009 lux
IR Thermal imager	640*512, 19mm focus length, 12μm
AI Function	Human/Vehicle AI identification and tracking
Laser range	5~1500m
Object Tracking	✓
Working voltage	4S~6S
Output	1080p micro HDMI / IP
Control method	PWM / PPM / UART / S.BUS / TCP / UDP
Local storage	SD card up to 256G
N.W.	986g
Dimension	129.5*174*195.5mm



A30T-50

30x AI Object Tracking EO+IR Dual Sensors Gimbal Camera

Imager sensor	1/2.8" STARVIS 2 CMOS
Lens	30x optical zoom, f=4.3~129mm
Total pixel	2.13MP
IR Thermal imager	640*512, 50mm focus length, 12μm
AI Function	Human/Vehicle AI identification and tracking
Object Tracking	✓
Working voltage	4S~6S
Output	1080p Micro HDMI / IP
Control method	PWM / PPM / UART / S.BUS / TCP / UDP
Local storage	SD card up to 256G
N.W.	1202g
Dimension	128*139.5*214.2mm





A30TR-50M

30x EO+IR AI Object Tracking Target GPS Coordinate Calculation and LRF Gimbal Camera

Imager sensor	1/2.8" STARVIS 2 CMOS
Lens	30x optical zoom, f=4.3~129mm
Total pixel	2.13MP
IR Thermal imager	640*512, 50mm focus length, 12μm
AI Function	Human/Vehicle AI identification and tracking
Laser range	50~5000m
Object Tracking	✓
Working voltage	4S~6S
Output	1080p Micro HDMI / IP
Control method	PWM / PPM / UART / S.BUS / TCP / UDP
Local storage	SD card up to 256G
N.W.	1358g
Dimension	138*145.8*218.2mm



A40 Pro

40x EO AI Object Tracking Gimbal Camera

Imager sensor	1/2.8" SONY CMOS
Lens	40x optical zoom, f=4.25~170mm
Total pixel	2.13MP
AI Function	Human/Vehicle AI identification and tracking
Object Tracking	✓
Working voltage	4S~6S
Output	1080p micro HDMI / IP
Control method	PWM / PPM / UART / S.BUS / TCP / UDP
Local storage	SD card up to 256G
N.W.	905g
Dimension	118*134.5*193.8mm



A30TR-1575

30x EO+IR AI Object Tracking Target GPS Coordinate Calculation and LRF Gimbal Camera (5X IR)

Imager sensor	1/1.8 Type STARVIS CMOS
Lens	30x optical zoom, f=6.5~162.5mm
Total pixel	4.17MP
IR Thermal imager	640*512, 15~75mm focus length, 5X optical zoom, 12μm, 25Hz
AI Function	Human/Vehicle AI identification and tracking
Laser range	50~10000m
Object Tracking	✓
Working voltage	4S~6S
Output	IP
Control method	PWM / S.BUS / UART / TCP / UDP
Local storage	SD card up to 256G
N.W.	2300g
Dimension	190*232*246.5 mm

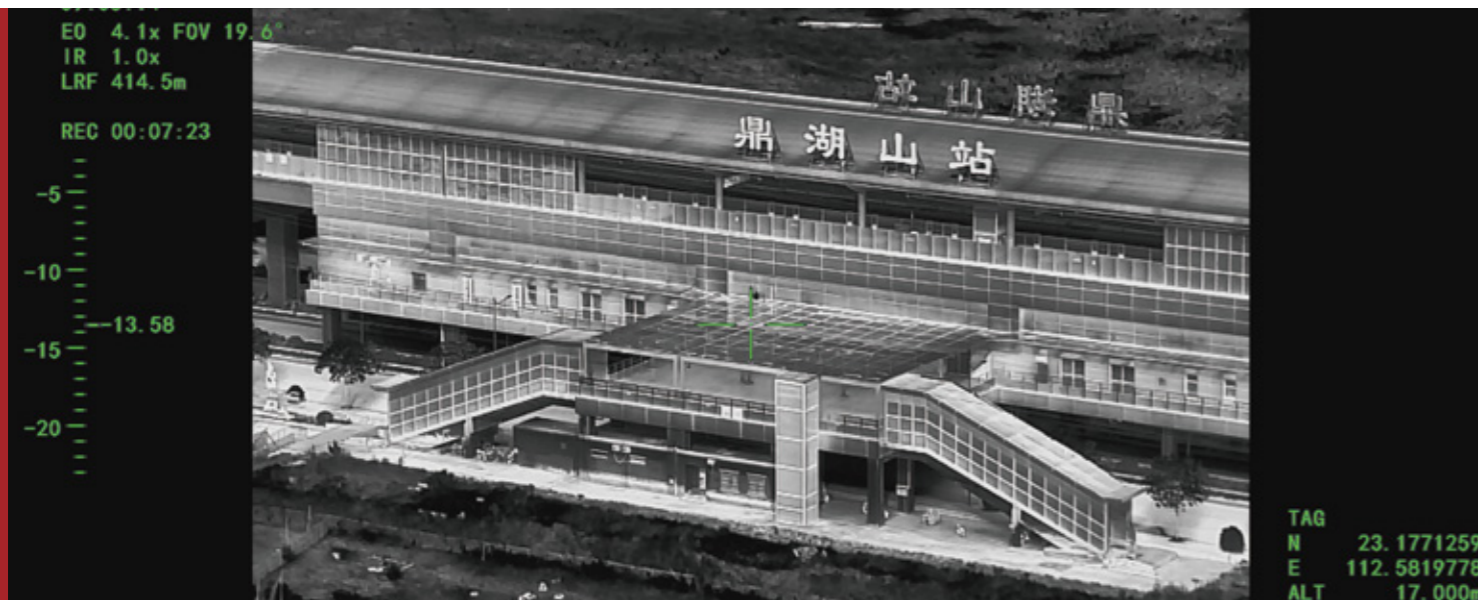


A40T Pro

40x EO+IR Dual Sensors AI Object Tracking Gimbal Cameras

Imager sensor	1/2.8" SONY CMOS
Lens	40x optical zoom, f=4.25~170mm
Total pixel	2.13MP
IR Thermal imager	640*512, 19mm focus length, 12μm
AI Function	Human/Vehicle AI identification and tracking
Object Tracking	✓
Working voltage	4S~6S
Output	1080p micro HDMI / IP
Control method	PWM / PPM / UART / S.BUS / TCP / UDP
Local storage	SD card up to 256G
N.W.	944g
Dimension	118*134.5*193.8mm





A40TR Pro

40x EO+IR AI Object Tracking Target GPS Coordinate Calculation and LRF Gimbal Camera

Imager sensor	1/2.8" SONY CMOS
Lens	40x optical zoom, f=4.25~170mm
Total pixel	2.13MP
IR Thermal imager	640*512, 19mm focus length, 12μm
AI Function	Human/Vehicle AI identification and tracking
Laser range	50~3000m
Object Tracking	✓
Working voltage	4S~6S
Output	1080p micro HDMI / IP
Control method	PWM / PPM / UART / S.BUS / TCP / UDP
Local storage	SD card up to 256G
N.W.	990g
Dimension	125*134.2*204.7mm



A40TR-35

40x EO+IR AI Object Tracking Target GPS Coordinate Calculation and LRF Gimbal Camera

Imager sensor	1/2.8" SONY CMOS
Lens	40x optical zoom, f=4.25~170mm
Total pixel	2.13MP
IR Thermal imager	640*512, 35mm focus length, 12μm
AI Function	Human/Vehicle AI identification and tracking
Laser range	50~3000m
Object Tracking	✓
Working voltage	4S~6S
Output	1080p micro HDMI / IP
Control method	PWM / PPM / UART / S.BUS / TCP / UDP
Local storage	SD card up to 256G
N.W.	1034g
Dimension	130*136*209.9mm



AT9-50

5.5x Dual IR Thermal Sensors AI Object Tracking Gimbal Camera

IR Thermal imager -1	50mm focus length, 640*512, 30Hz, 12μm
IR Thermal imager -2	9.1mm focus length, 640*512, 30Hz, 12μm
AI Function	Human/Vehicle AI identification and tracking
Object Tracking	✓
Working voltage	4S~6S
Output	micro HDMI / IP
Control method	PWM / UART / S.BUS / TCP / UDP
Local storage	SD card up to 256G
N.W.	713g
Dimension	102*111.9*168.2mm



AT19

19mm Single IR Thermal AI Object Gimbal Camera

Lens	19mm focus length
Resolution	640*512
Pixel pitch	12μm
AI Function	Human/Vehicle AI identification and tracking
Object Tracking	✓
Working voltage	4S~6S
Output	1080P micro HDMI / IP
Control method	PWM / PPM / UART / S.BUS / TCP / UDP
Local storage	SD card up to 256G
N.W.	462g
Dimension	86*118.2*143.2mm



AT50

50mm Single IR Thermal AI Object Gimbal Camera

Lens	50mm focus length
Resolution	640*512
Pixel pitch	12μm
AI Function	Human/Vehicle AI identification and tracking
Object Tracking	✓
Working voltage	4S~6S
Output	1080p micro HDMI / IP
Control method	PWM / PPM / UART / S.BUS / TCP / UDP
Local storage	SD card up to 256G
N.W.	717g
Dimension	100.8*134*163.6mm



Target GPS Coordinate Calculation and Laser Rangefinder Series

An advanced location Calculation algorithm is used to accurately analyze the GPS location of the object, calculate the distance of the object, and superimposed on the display. Laser rangefinder gimbal cameras have a great auxiliary role in the law enforcement, firefighting etc.



T Series Dual-Sensor Object Tracking Series

Integrated high-precision uncooled long wave IR thermal image sensor, EO + IR dual-sensor gimbal cameras can record and transmit IR thermal image and visible images at the same time. See the unseen. IR Thermal sensors reveal details invisible to the naked eye by making subtle differences in temperature visible. This new view on the world can reveal the damage of equipment or buildings, fire spark in forest, the location of people or animals and more. Thermometry function even increases the IR thermal inspection standard to a higher level.



Q20KTIRM

20x EO 4K Triple Sensors Object GPS Coordinate Calculation and LRF Gimbal Camera

Imager sensor	1/2.5 CMOS Sensor
Lens	20x optical zoom, f=4.4~88.4mm
Total pixel	8.51MP
IR Thermal imager	640*512, 24mm focus length, 12μm, 50Hz
Laser range	50~3000m
Object Tracking	✓
Working voltage	4S~6S
Output	1080p micro HDMI / IP (4K/1080P)
Control method	PWM / S.BUS / UART / TCP / UDP
Local storage	SD card up to 512G Take 4K photos; Video 4K (IP1080P)
N.W.	1153g
Dimension	132*156.6*196.7mm



ZIR1352T

IR Thermal Dual-Sensor Object Tracking Gimbal Camera

IR Thermal imager -1	13mm focus length, 640*512, 25Hz, 12μm
IR Thermal imager -2	52mm focus length, 640*512, 25Hz, 12μm
Object Tracking	✓
Working voltage	4S~6S
Output	micro HDMI / IP
Control method	PWM / S.BUS / UART / TCP / UDP
Local storage	SD card up to 512G
N.W.	693g
Dimension	127.5*127.4*146.9mm



Q30TIRM Pro

30x Object GPS Coordinate Calculation and LRF Gimbal Camera

Imager sensor	1/2.8" SONY CMOS
Lens	30x optical zoom, f=4.3~129mm
Total pixel	2.13MP
IR Thermal imager	640*512, 35mm focus length, 25Hz, 12μm
Laser range	50~3000m
Object Tracking	✓
Working voltage	4S~6S
Output	1080p micro HDMI / IP / SDI
Control method	UART / PWM / PPM / S.BUS / TCP / UDP
Local storage	SD card up to 512G
N.W.	1013g
Dimension	130.6*165.1*199.3mm



Q20KTIR

20x 4K EO + IR Dual-Sensor Object Tracking Gimbal Camera

Imager sensor	SONY 1/2.5" "Exmor R" CMOS
Lens	20x optical zoom, f = 4.4 ~88.4 mm
Total pixel	8.51MP
IR Thermal imager	640*512, 24mm focus length, 50Hz, 12μm
Object Tracking	✓
Working voltage	4S~6S
Output	1080p micro HDMI / IP (4K/1080P)
Control method	PWM / S.BUS / UART / TCP / UDP
Local storage	SD card up to 512G Take 4K photos; Video 4K (IP1080P)
N.W.	910g
Dimension	118.7*132.3*191.2mm





Single Sensor Object Tracking Series

Build-in normalization, cross-correlation and tracking algorithm, combining with object missing recapture algorithm, object tracking gimbal cameras achieve stable tracking of a target. Mainly used for law enforcement, security protection, inspection and also be helpful for zooming a target without losing it.



Q30TIR LITE

30x EO + IR Dual-Sensor Object Tracking Gimbal Camera

Imager sensor	1/2.8" SONY CMOS
Lens	30x optical zoom, f=4.3~129mm
Total pixel	2.13MP
IR Thermal imager	640*512, 24mm focus length, 25Hz, 12μm
Object Tracking	✓
Working voltage	4S~6S
Output	1080p micro HDMI / IP / SDI
Control method	UART / PWM / PPM / S.BUS / TCP / UDP
Local storage	SD card up to 512G
N.W.	889g
Dimension	111.6*129.8*184.2mm



U30TIR

30x EO + IR Dual-Sensor Object Tracking Gimbal Camera

Imager sensor	1/2.8" SONY CMOS
Lens	30x optical zoom, f=4.3~129mm
Total pixel	2.13MP
IR Thermal imager	640*480, 24mm focus length, 25Hz, 12μm
Object Tracking	✓
Working voltage	4S~6S
Output	1080p micro HDMI / IP / SDI
Control method	UART / PWM / PPM / S.BUS / TCP / UDP
Local storage	SD card up to 512G
N.W.	991g
Dimension	127*122*195.4mm



Q30T Pro

30x Optical Zoom Object Tracking Gimbal Camera

Imager sensor	1/2.8" SONY CMOS
Lens	30x optical zoom, f=4.3~129mm
Total pixel	2.13MP
Object Tracking	✓
Working voltage	4S~6S
Output	1080p micro HDMI / IP / SDI
Control method	UART / PWM / PPM / S.BUS / TCP / UDP
Local storage	SD card up to 512G
N.W.	811g
Dimension	104.9*128.2*180mm



U30T

30x Optical Zoom Object Tracking Gimbal Camera

Imager sensor	1/2.8" SONY CMOS
Lens	30x optical zoom, f=4.3~129mm
Total pixel	2.13MP
Object Tracking	✓
Working voltage	4S~6S
Output	1080p micro HDMI / IP / SDI
Control method	UART / PWM / PPM / S.BUS / UDP / TCP
Local storage	SD card up to 512G
N.W.	704g
Dimension	115.8*103.5*145.2mm



Z36T Cube

36x Starlight Level Night Vision Object Tracking
Gimbal Camera (Starlight level)

Imager sensor	1/2" SONY CMOS
Lens	36x optical zoom, f=6.0~216mm
Total pixel	2.13MP
Lux	Color: 0.01 lux, BW: 0.002lux, STARLIGHT
Object Tracking	✓
Working voltage	4S~6S
Output	1080p micro HDMI / IP
Control method	UART / PWM / PPM / S.BUS / TCP / UDP
Local storage	SD card up to 512G
N.W.	842g
Dimension	106.6*182.1*185mm



Q20T

20x Optical Zoom 4K Output Object Tracking Gimbal Camera

Imager sensor	1/2.5" SONY CMOS
Lens	20x optical zoom, f=2.0~3.8mm
Total pixel	8.51MP
Object Tracking	✓
Working voltage	4S~6S
Output	1080p micro HDMI/4K IP
Control method	UART / PWM / PPM / S.BUS / UDP / TCP
Local storage	SD card up to 512G
N.W.	663g
Dimension	105*140.6*165.9mm



Single Sensor Gimbal Camera Series



Q10F

10x Optical Zoom Gimbal Camera

Imager sensor	1/3" CMOS
Lens	10x optical zoom, f=4.9~49mm
Total pixel	4MP
Working voltage	4S~6S
Output	1080p micro HDMI / AV
Control method	UART / PWM / PPM / S.BUS
Local storage	SD card up to 32G
N.W.	383g
Dimension	86.2*108*136.7mm



Q10N

10x Optical Zoom Gimbal Camera

Imager sensor	1/2.8" CMOS
Lens	10x optical zoom, f=4.9~49mm
Total pixel	2MP
Working voltage	4S~6S
Output	IP
Control method	UART / PWM / PPM / S.BUS / TCP
Local storage	SD card up to 256G
N.W.	410g
Dimension	91.6*111.4*139.2mm



DJI PSDK Compatible

Built with DJI Skyport, all models can be directly compatible with Matrice 300 RTK and Matrice 350 RTK, and can be auto-recognized and completely controlled by APP "DJI Pilot".





Specialized Payload Series



Z6K Pro

3-axis Lightweight Multi-load Gimbal

- Support Sony A5xxx, A6xxx, Sony RX100 series etc
- Support Flir Duo Pro R/ Flir Vue Pro / Flir Vue
- Working Voltage: 16V
- Control: PWM/S.BUS/TTL
- N.W.: 790g

M120 Pro

Loudspeaker

- Power: 25W
- Maximum sound pressure: 124 dB
- Operating temperature: -10°C—45°C
- Effective broadcast distance: 550 meters
- Speaker mode: Real-time / Recording / Audio file upload / Text to voice
- Audio format: MP3/WAV/M4A/FLAC/AAC
- N.W.: 691g



Z-6K

SONY ILCE Gimbal

- Support Sony ILCE a6000
- HDMI signal is routed internally from the bottom to the top of the gimbal
- Gimbal function: supply power, photo shoot, record, zoom, etc
- Control method: UART/PWM/PPM/S.BUS
- N.W.: 550g



L4 Pro

- 13500lm
- Roll: $\pm 70^\circ$, heading: $\pm 120^\circ$
- Lighting distance: 150m
- Net weight: 790g



Viewport

Viewpro Quick Setup and Release Mechanism

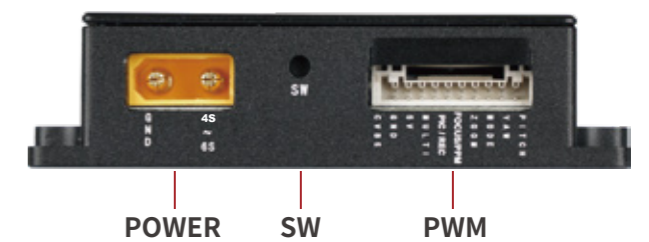
- Compatible with Viewpro's full range of pods
- Net weight: 145 grams
- Quick release board size: 100*100*25.5mm
- Control box size: 48.4*56.2*14.2mm

Viewport Overview



Viewport

Left

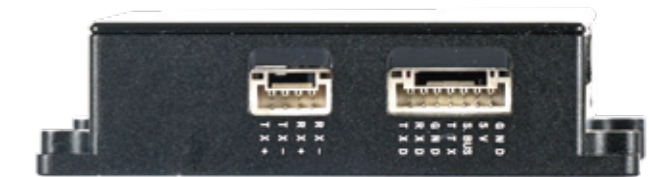


Front



HDMI

Right

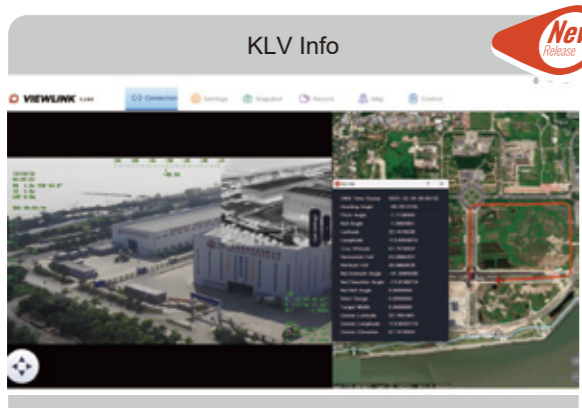
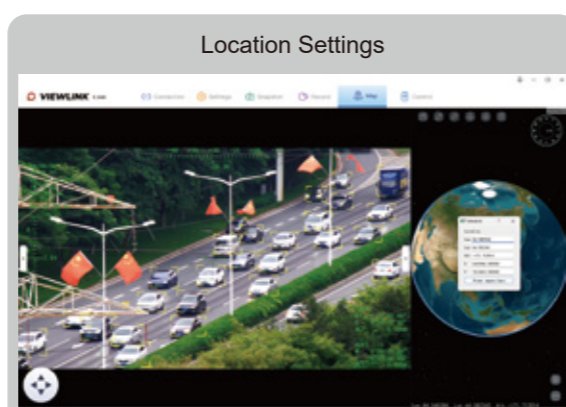
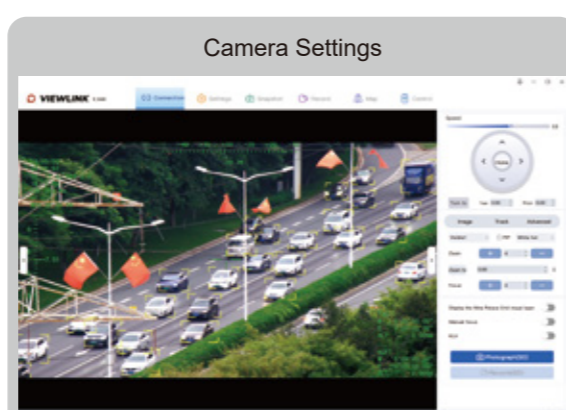
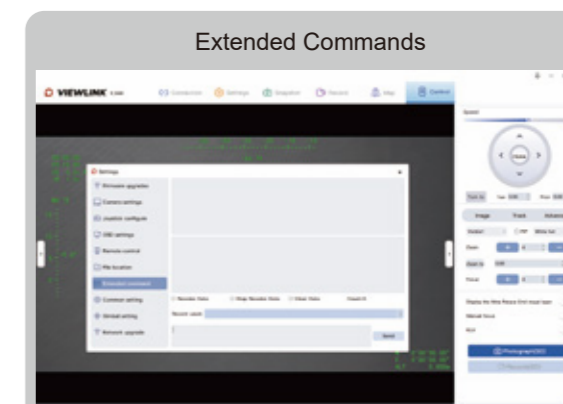
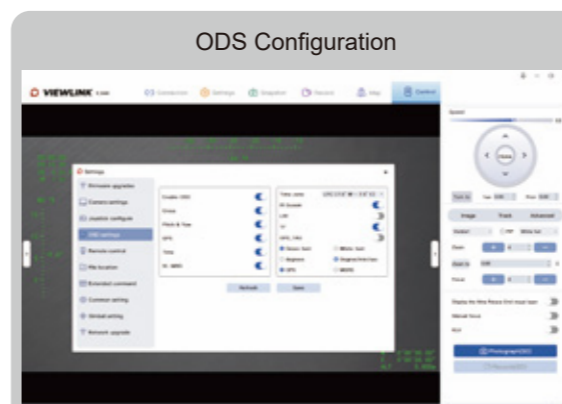
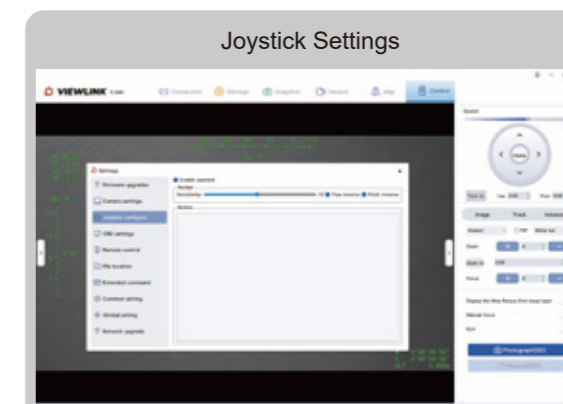
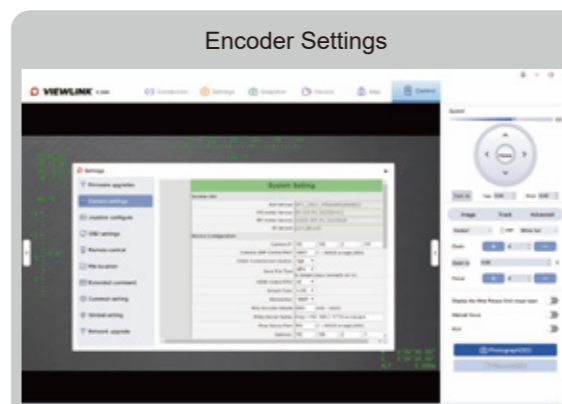


ETHERNET UART & S.BUS

Viewlink Overview

Viewlink is a professional and user-friendly gimbal control software developed by Viewpro. It supports IP (RTSP/UDP/RTMP) and USB connections. Its built-in video player is intelligently optimized based on the user's computer configuration, providing an ultimate viewing experience with smooth and delicate visuals. Additionally, it supports multi-stream pulling, virtual nine-grid lines for balanced visuals. It can connect to Ethernet TCP/UDP or serial port TTL for gimbal control, enabling features such as gimbal firmware upgrades, encoder settings, 3D map visualization, KLV playback, flight path recording, live streaming, joystick configuration, OSD settings, remote control settings, file saving, extended commands, and general settings etc.

Windows



Android

